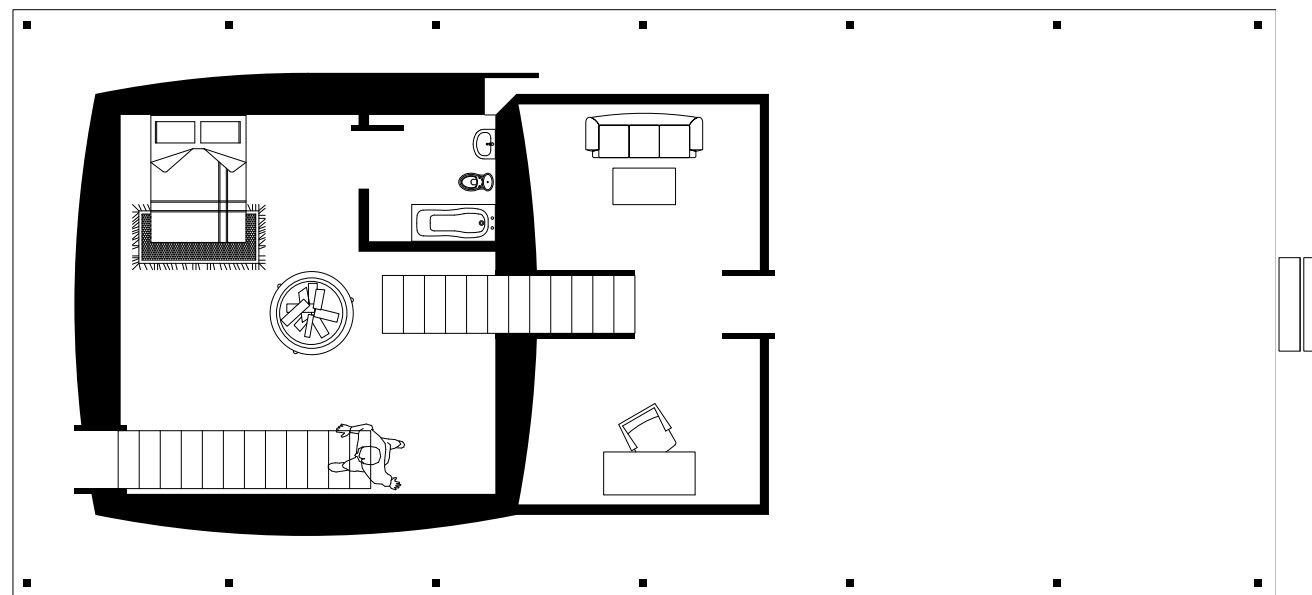
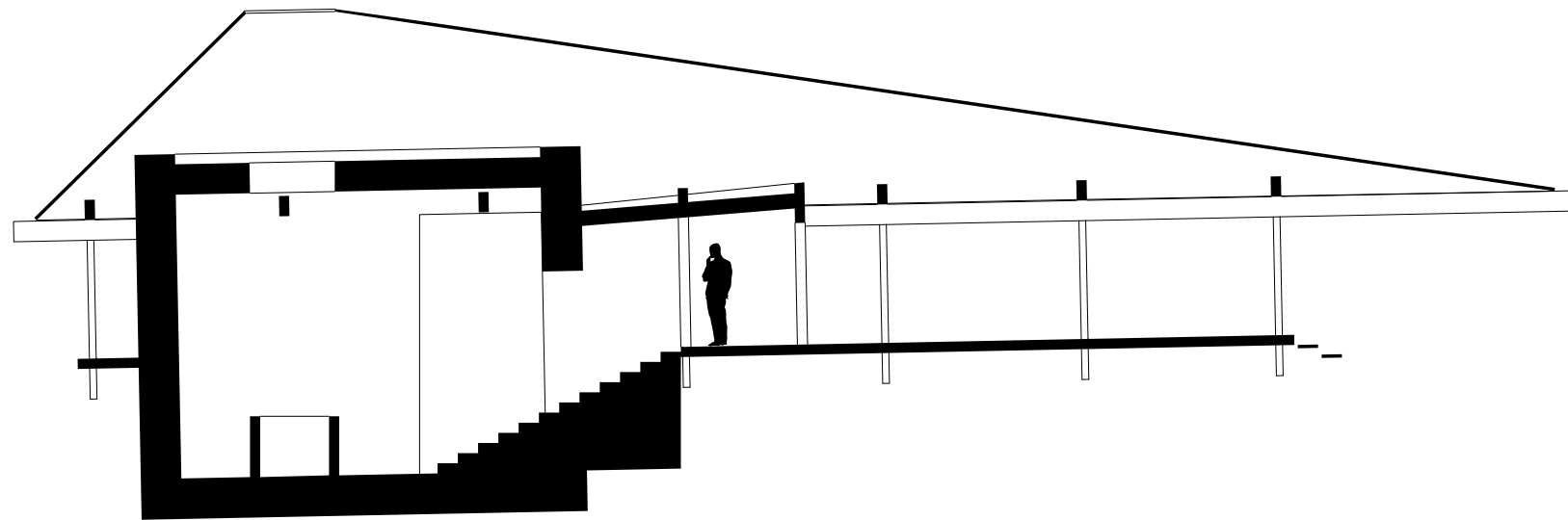
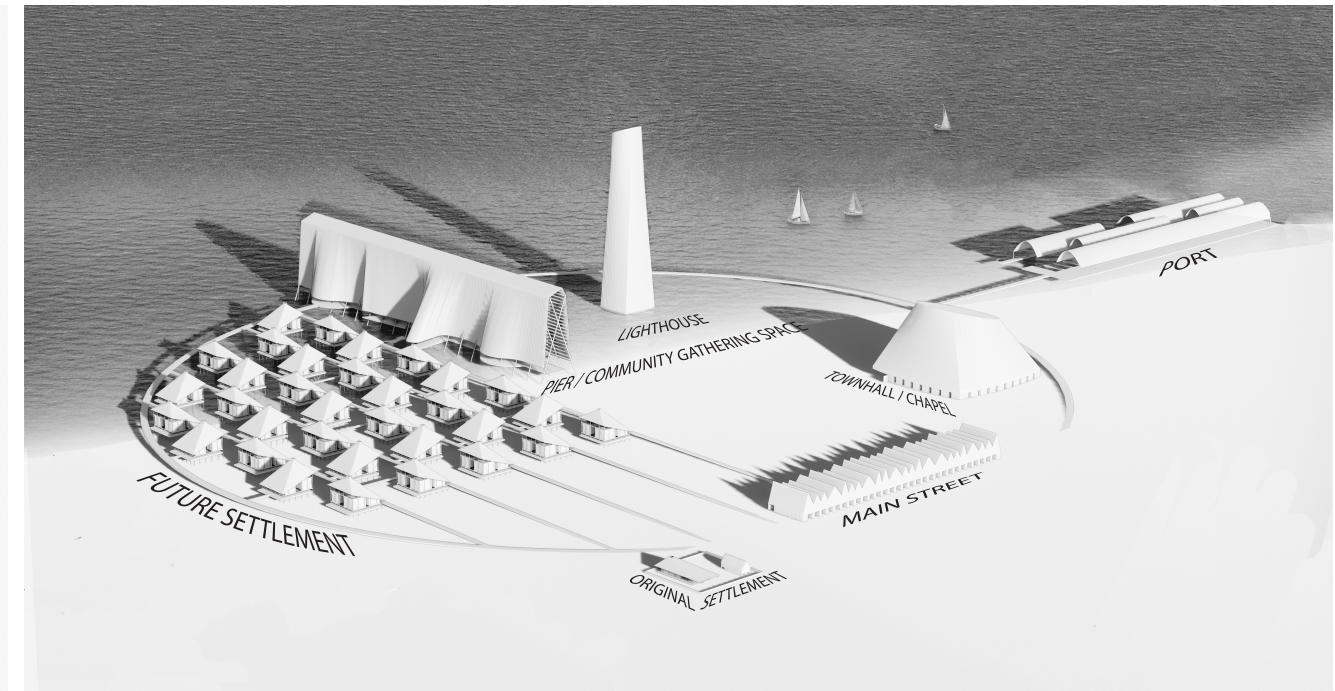
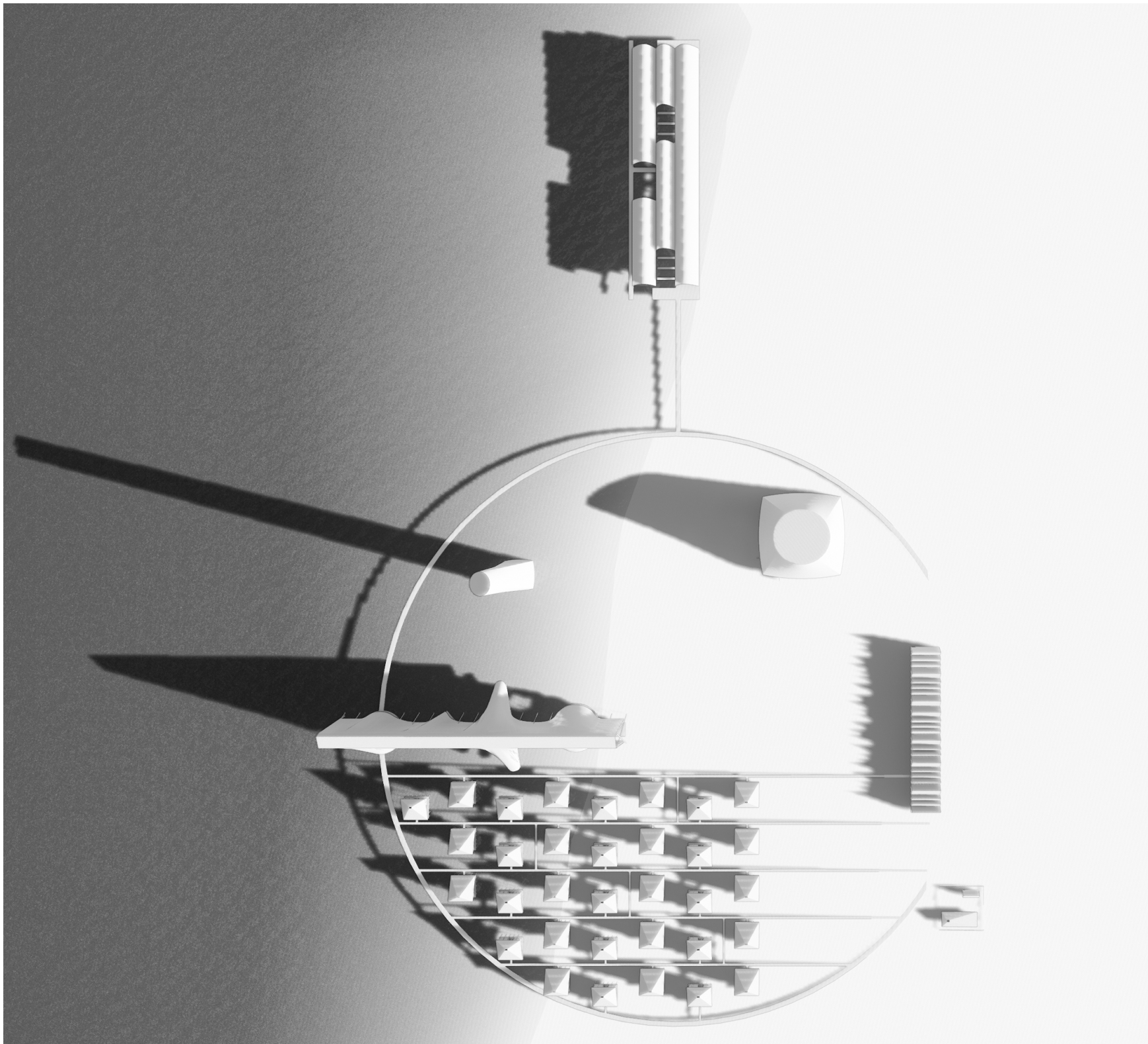


# Permanence / Impermanence

*The unwanted immigrant is left hoping, and constantly transforming, working to break stereotypes and bend paradigms. Propaganda tells the world who he is, rather than demonstration. He is the symbol of a forgotten community, and an underrepresented group. Svalbard is a amalgamation of his experiences through its physical forms and features, and this leads the immigrant to his destination where few have gone, but all will be heard.*







The immigrant - whether exiled by or fleeing his country - is found wanting. By the nature of his fleeting social society, he embodies the nature of mankind's relationship with place - longing for a landscape both welcoming and of consolation. Svalbard became his compliment, being historically conducive with an ethereal atmosphere. His new home becomes an architectural manifestation of him, a symbiosis of culture and temporariness, through landscape and nothingness, culminated into one place – where one can belong. The town as it grows in the next 100 years begins to evolve from the original settlement, utilizing his forms in the creation of the rest of the town. The pier binds the entire town together, anchoring it on a central axis, and the form is created through the binding of the sails that the immigrants travel in on allowing them to become a stitch in the fabric of this town. This calls for the constant evolution of the pier itself, as it grows and expands, representing different people who step foot amongst the brave immigrants on their journey. Thus, symbolizing the importance of every person and their contribution to their new home in *kanten av verden* -- the edge of the world.