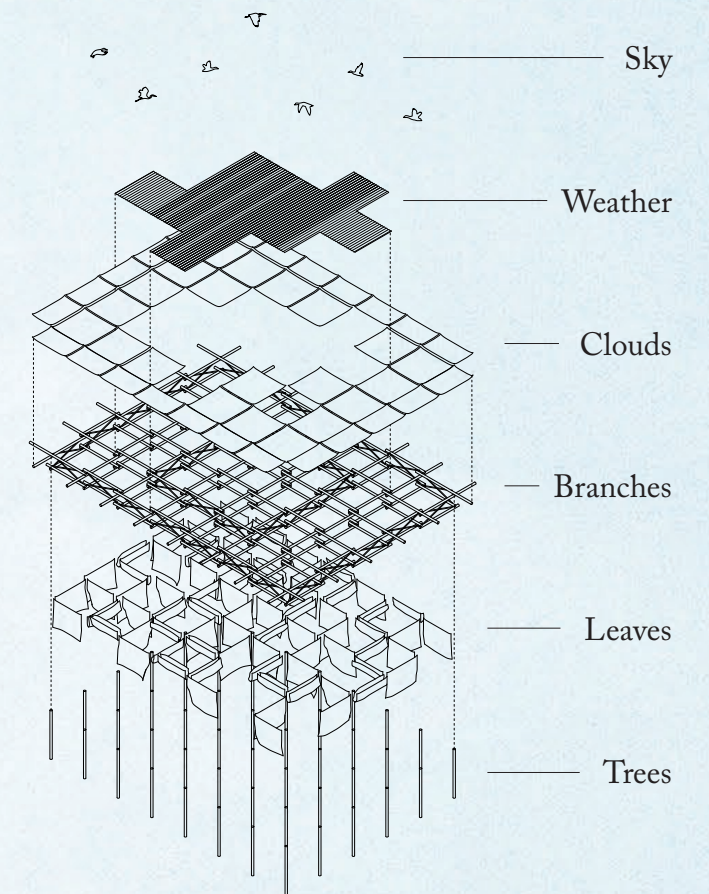
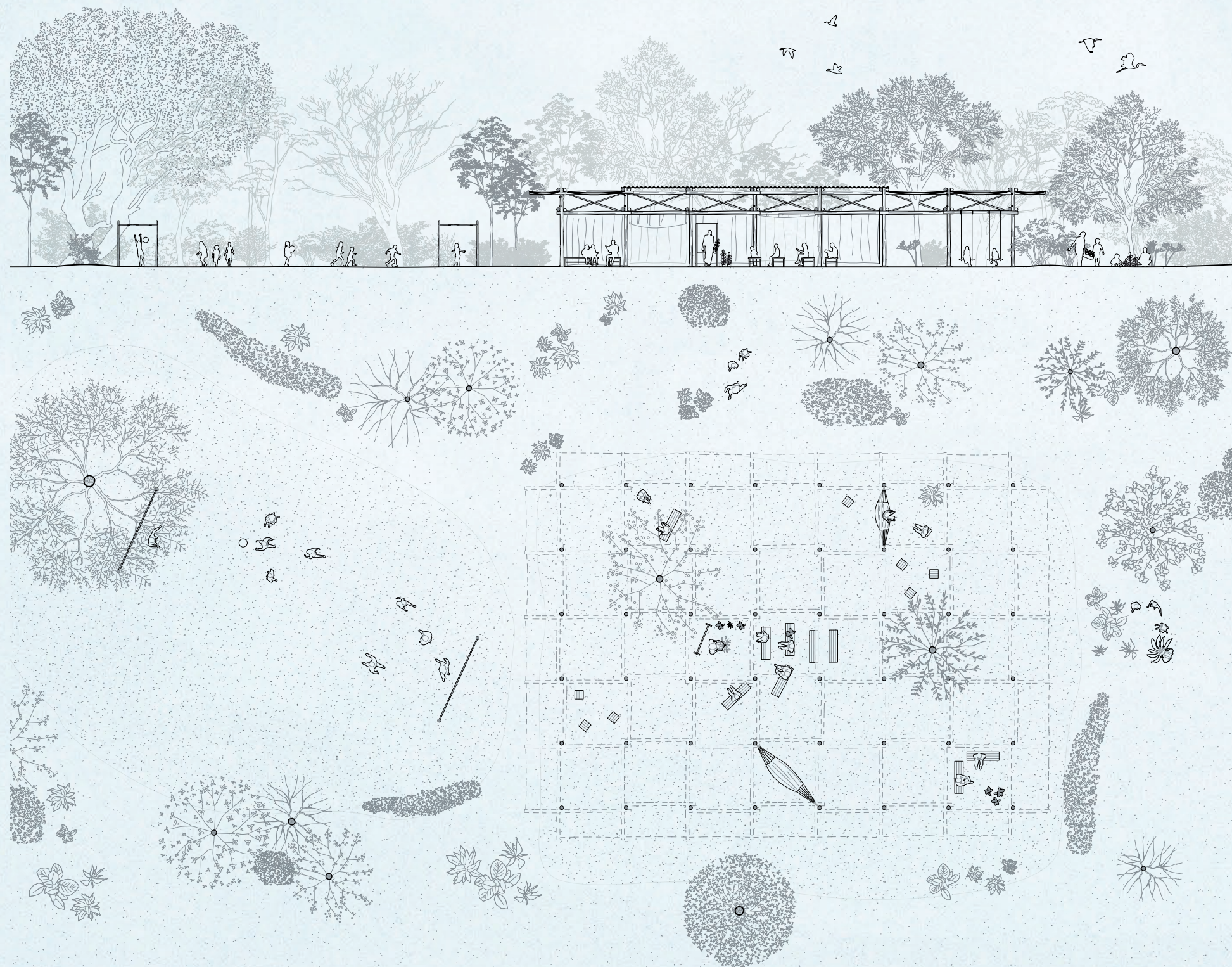


Being under the Sky



The design reflects situations of life in touch with nature. The relationship of man-made objects and the surrounding landscape changes with the needs of its users and the local weather conditions. It provides shelter or allows exposure to the elements.

„A boundary is not that at which something stops but [...] that, from which something begins its presencing.“
Martin Heidegger

A place is established by negotiating
intimate · public
shelter · open space
above · beneath
communication · silence
individually · together
silence · noise

